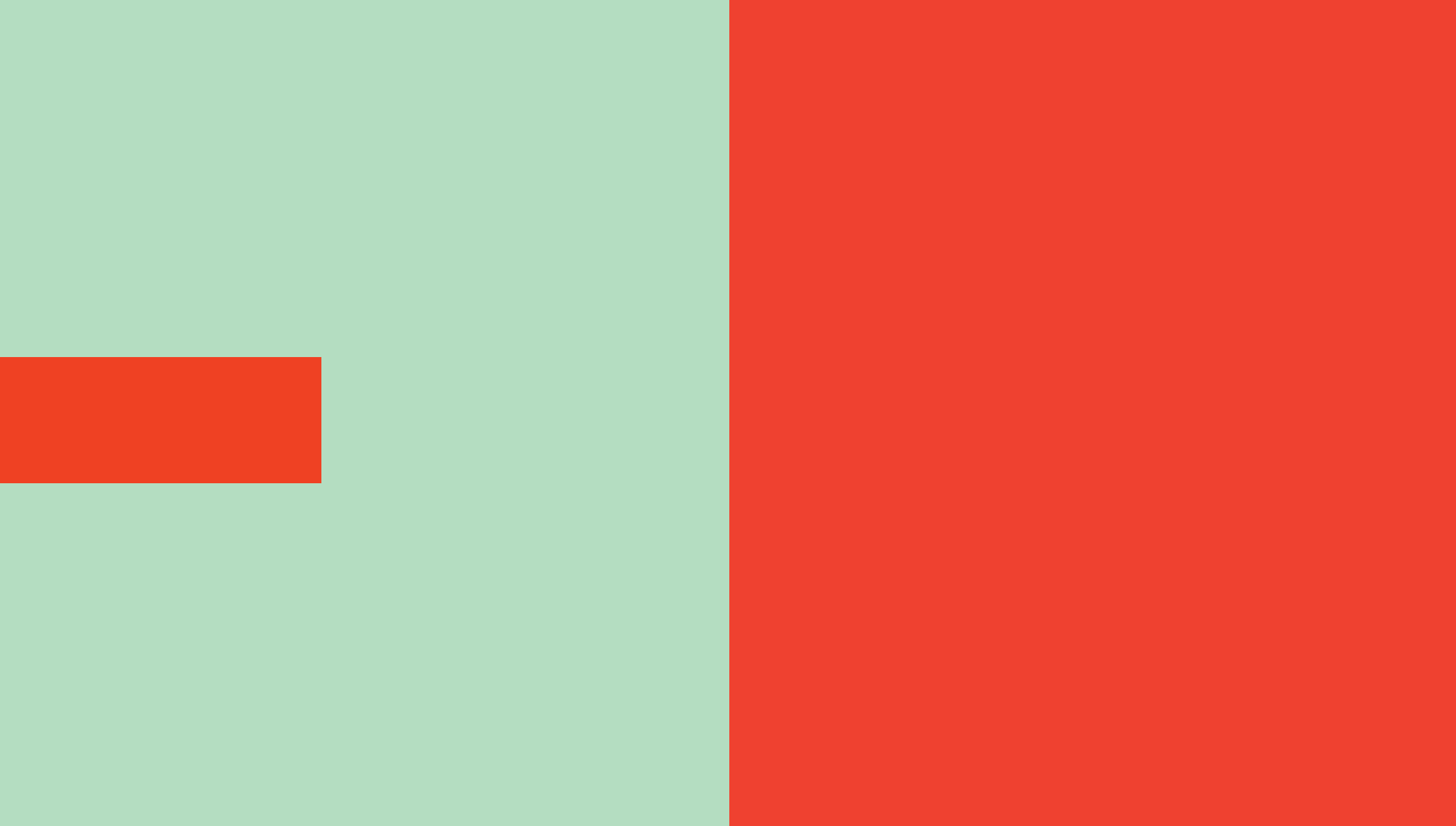


ART **FROM** **BERLIN**

CONTEXT art miami 2014





ART FROM BERLIN

Selection of Berlin Galleries
at CONTEXT art miami
December 2 – 7, 2014
Miami | USA

Foreword



ART FROM BERLIN is continuing its presentation of Berlin galleries in Miami for the third time.

In November 2014 Berlin will be celebrating 25th anniversary of the fall of the Berlin wall. 25 years after the reunification of Berlin, the German capital is internationally renowned for being the largest and most remarkable location for contemporary art production. We are very happy about the lasting attraction of our city to artists, art experts and collectors and hopefully it will prosper and develop.

The attraction of Berlin for art makers and art lovers is both an opportunity and a challenge for the city's art market. And rising to this challenge are Berlin's galleries. With their professionalism, networking and support of emerging artists, they set a high benchmark.

With ART FROM BERLIN six galleries selected by a professional jury out of Berlin based art critics, curators and gallerists will showcase the current tendencies of the Berlin art market. Cutting edge positions and special interpretations of diverse currents of art will easily fulfil the strictly contemporary approach intended by CONTEXT art Miami.

The BERLIN LOUNGE as hub for the galleries' presentation will install a curated exhibition featuring one of the numerous art institutions for contemporary art in Berlin and offer information on the city's contemporary art galleries and museums.

Tim Renner

Permanent Secretary for Cultural Affairs

Galleries

Galerie Friedmann-Hahn p 09

Galerie Kornfeld p 13

Läkemäker p 17

Grundemark Nilsson Gallery p 21

Tammen & Partner p 25

Wichtendahl Galerie p 29

BERLIN LOUNGE p 33
featuring Freundeskreis Willy-Brandt-Haus e. V.

Galerie Friedmann-Hahn

Josef Fischnaller, Edite Grinberga, Nikolai Makarov
David FeBland, Markus Fräger, Anders Gjennestad,
Thomas Kaemmerer, Anne Leone, Daniel Ludwig,
Sasa Makarova, Nina Nolte, Rolf Ohst, Thengis Rioni,
Mirko Schallenberg, Guido Sieber, Marc Sparfel,
Marc Taschowsky, Donald Vaccino, Maximilian Verhas



Edite Grinberga: Tür ins Dunkel, 2014 | oil on canvas | 130 x 200 cm

stand Galerie Friedmann-Hahn Alexander Friedmann-Hahn
 Wielandstr. 14, D-10629 Berlin
 T: +49 30 31997717, F: +49 30 68835858
 info@galeriefriedmann-hahn.com
 www.galeriefriedmann-hahn.com

gallery profile Galerie Friedmann-Hahn was founded in 2005 and represents about 20 international artists on a permanent basis. Specializing in virtuoso representatives of Contemporary Figurative Painting, the gallery shows at least eight solo exhibitions per year, all of them accompanied by a comprehensive catalogue. Furthermore, the gallery program is complemented by a photographic and two sculptural positions. Galerie Friedmann-Hahn collaborates with various national and international galleries.

about the artists The success and the interest shown in our gallery's program encourage us to participate in national and international art fairs. We see this as an ideal opportunity to present the gallery and its artists to a qualified audience as well as expanding existing relations with colleagues, collectors, and art societies.

The following artists will be showcased as representative of the gallery: Nikolai Makarov (painting), Edite Grinberga (painting) and Josef Fischnaller (photography). By choosing these three, we offer a glimpse of the wide variety within the gallery's program.



Josef Fischnaller: Ricarda, 2013 | alu dibond/acrylic | 160 x 120 cm

Galerie Kornfeld

José Manuel Ciria, Alexander Polzin, Leonardo Silaghi
Maliheh Afnan, Claudia Chaseling, Stephane Couturier,
Robert Fry, Hubertus Hamm, Natela Iankoshvili,
Franziska Klotz, Tamara Kvesitadze, Ralf Peters,
Susanne Roewer, Hubert Scheibl, Sonny Sanjay Vadgama



Alexander Polzin: Double Angel, 2013 | bronze | 65 x 80 x 60 cm

stand **Galerie Kornfeld** Alfred Kornfeld
 Fasanenstraße 26, D-10719 Berlin
 T: +49 30 889225 -890, F: -899
 galerie@galeriekornfeld.com
 www.galeriekornfeld.com

gallery profile Since its opening in 2012, Galerie Kornfeld has been dedicated to developing a cross-disciplinary, transgenerational gallery program in collaboration with artists, filmmakers, critics, art historians, and curators. An international exhibition program engaging with a vast array of practices and positions forms the basis for a heterogeneous artistic discourse. Solo shows by talented young artists are juxtaposed with exhibitions by prominent, established figures, a combination that promotes bold associations while also revealing generational contrasts and reciprocal penchants. Galerie Kornfeld is strongly committed to fostering an extensive dialogue with the public, one that finds its *raison d'être* in international fairs, hosted events, and supplementary activities.

about the artists For Context Art Miami 2014, Galerie Kornfeld will present a curated booth showing works by José Ciria, Alexander Polzin, and Leonardo Silaghi. Ciria's artistic investigations seek the equilibrium between geometry and abstraction on canvas. Polzin's sculptures draw from classical references, conveying delicate metaphors of the human condition. Paintings by Leonardo Silaghi are based on contrasting, contradictory positions: gestural abstract brushstrokes meet figurative and descriptive representations, gray monochrome meets vivid colors.



José Manuel Ciria: Rainy Poem, 2006 | oil on canvas | 150 x 150 cm

Läkemåker

Lev Khesin, Hans Ticha, Jan Bejšovec
Ji In Park, Günther Hornig, Nicola Rubinstein,
Emmanuel Berry, Chris Newman, Dan Asher



Jan Bejšovec: On The Edge, 2014 | appliqués and hand embroidery | 55 x 55 cm

stand LÄKEMÄKER Johannes Zielke
 Schwedter Str. 17, D-10119 Berlin
 T: +49 30 74786538, M: +49 175 8852361
 galerie@laekemaeker.com
 www.laekemaeker.com

gallery profile The gallery was established in 1990 by Johannes Zielke in the Berlin district of Prenzlauer Berg. It focuses on the discovery of young artists who work in their own conceptual context and display a singular figurative language and unique stylistic elements, as well as the exclusive collaboration with established contemporary artists. The gallery's artistic spectrum is marked by the singularity of spirited expression beyond the mainstream as well as an ability to reduce matters to their artistic essence.

about the artists Lev Khesin (born 1981, RUS) studied painting at the Berlin University of the Arts (UdK). His reduced, abstract painting (post-painterly abstraction) follows the tradition of the Russian and American avant-gardes (Jules Olitski, Mark Rothko) and uses new and extraordinary technologies.

Jan Bejšovec (born 1975, GDR/D) lives and works in Berlin. His pictures of fabric that is partially fraught with history are a textile version of graffiti. The handmade appliqués and embroidery confront us like the graffiti by Banksy with either current political themes or historic social issues.

Hans Ticha (born 1940, D) is a grand Old Master of the late German postwar avant-garde. As an "old-school" painter he has formed a distinctive style between figuration and abstraction that includes the traditions of Constructivism, the French avant-garde, the Bauhaus, and Pop Art.



Lev Khesin: Ustringe, 2013 | silicone and pigments on wood | 87 x 80 cm

Grundemark Nilsson Gallery

**Pernilla Zetterman, Sascha Weidner, Inka and Niclas
Agneta Ekman, Aida Chehrehgosa,
Annika Thörn Legzdins, Christer Strömholm,
Dawid, Gerry Johansson, Gunnar Smoliansky,
Henrik Isaksson Garnell, Lars Tunbjörk,
Martina Hoogland Ivanow, Tuija Lindström**



Sascha Weidner: Hanami No 1, 2013 | photograph | 110 x 150 cm

stand Grundemark Nilsson Gallery Nina Grundemark, Dorothée Nilsson
 Köpenickerstr. 126, D-10179 Berlin
 T: +49 30 8147 3709
 gallery@grundemarknilsson.se
 www.grundemarknilsson.se

gallery profile The Grundemark Nilsson Gallery, formerly known as Swedish Photography, is a Berlin-based privately owned gallery showing classic as well as contemporary photography. We present 5–6 exhibitions each year, all documented in an annual catalogue. The gallery was established in Stockholm in 2007 and moved to Berlin in 2010.

about the artists Nature constantly reconstructs and renews itself, blossoming in all its glory and then withering away again. Vocal and visual signals become less important as tactile signals intensify, the cycle of natural evolution going hand in hand with life.

Pernilla Zetterman's series *Close* expresses feelings found in a moment of intimate connection with a fellow-creature. Using close-ups, she shows the details of the bodies of horses and riding utensils.

Flower viewing is a traditional Japanese custom for enjoying the ephemeral beauty of flowers, the short period of virginity and youth every spring. Sasha Weidner's series *Hanami* (Japanese for "flower viewing") follows this Japanese tradition.

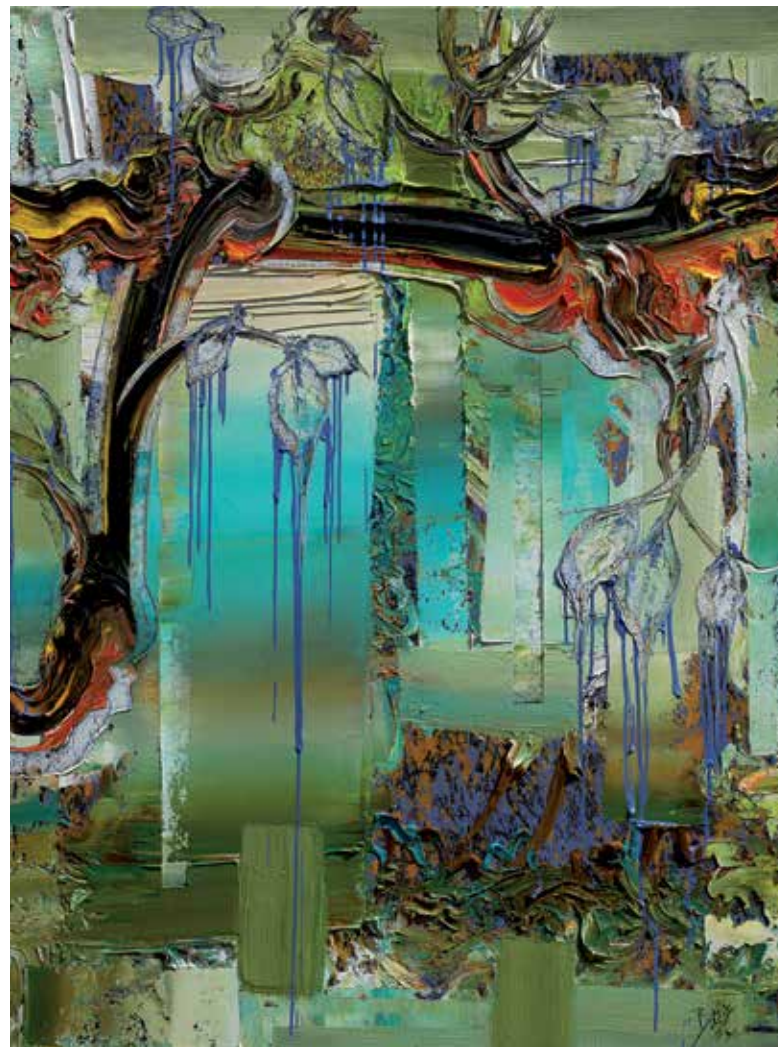
These two artists in combination lend the photographic medium a pronounced tactile quality.



Pernilla Zetterman: *Behind No 1*, 2004 | photograph | 120 x 85 cm

Tammen & Partner

Anke Eilergerhard, Dietmar Brixy, Moritz Götze
Marion Eichmann, Persis Eisenbeis,
Claudia Fährenkemper, Harald Gnade,
Sonja Edle von Hoeßle, Heike Jeschonnek,
Joseph Kersch, Marleen, Herbert Mehler,
Volker März, Florian Pelka, Werner Pokorny,
Michael Ramsauer, Werner Schmidt,
Lothar Seruset, Jan Thomas, Gabi Streile,
Detlef Waschkau, Hanefi Yeter, Zwinger



Dietmar Brixy: Discover 2014 | oil on canvas | 120 x 90 cm

stand Tammen & Partner Werner Tammen
 Hedemanstraße 14, D- 10969 Berlin
 T: +49 30 225027 -910, F: -911, M: +49 1752061942
 info@galerie-tammen-partner.de
 www.galerie-tammen-partner.de

gallery profile The gallery TAMMEN & PARTNER was founded in 1979 and has since then been exhibiting contemporary art, focusing primarily on painting, sculpture, drawing, and photography. The gallery is located in the well-known Berlin gallery district around Checkpoint Charlie. For years, the gallery has been taking part in international and national art fairs.

about the artists Three special and diverse artists represented by the gallery will be presented at the CONTEXT art fair this year. The very expressive work of Dietmar Brixy enters into an intriguing dialogue with the silicon kitchen sculptures by Anke Eilengerhard. Both artists were also successfully exhibited last year. These will be joined by the Pop-Art-inspired enamel works of Moritz Götze, an artist from former East Germany.



Anke Eilengerhard: Annegretchen, 2013 | silicon, porcelain | each 77 cm x ø 29 cm

Wichtendahl Galerie

Nicole Ahland, Katrin Günther, Silvia Schreiber
Alexandra Deutsch, Esther Glück, Rosa M Hessling,
Annette Meincke-Nagy, Katharina Meister,
Heidi Meyer, Annette Schröter, Reinhard Wöllmer,
Tilmann Zahn



Nicole Ahland: lights #1 | c-print | 100 x 100 cm

stand **Wichtendahl Galerie** Cornelia Wichtendahl
 Joachimstr. 7, D-10119 Berlin
 T: +49 30 94882908, M: +49 176 30769996
 galerie@wichtendahl.de
 www.wichtendahl.de

gallery profile Wichtendahl Galerie represents individual positions in contemporary art with a focus on works on paper, photography, and sculpture. Light and space are central subjects in the works of the gallery's artists. Wichtendahl Galerie was founded in 2005 and is located in the well-known gallery district of Berlin-Mitte.

about the artists Spaces are the central pictorial theme in Nicole Ahland's photographic works. Sometimes they are strangely veiled, sometimes plunged into darkness or radiated by a bright light.

Scenarios of nature and architectural elements along with a remarkable perspective create new spaces within the drawings of Katrin Günther, where well-known impressions mingle with unfamiliar elements.

Silvia Schreiber creates portraits and human figures with Japanese paper. Her sculptures are fragile and gossamer-light, even though they are larger than life-size.



Katrin Günther: Electric Spring, 2014 | ink, acrylic on canvas | 120 x 150 cm

BERLIN LOUNGE

featuring Freundeskreis Willy-Brandt-Haus e.V.

Welcome to the third BERLIN LOUNGE at CONTEXT art miami 2014. This hub provides an insight into Berlin as an art metropolis. With more than 350 galleries and about 200 museums, institutions and showrooms for contemporary art, Berlin is a magnet for international art lovers.

ART FROM BERLIN is a platform for the Berlin art scene at international art markets and is organized by the Galleries Association of Berlin (lvbg) with support from the state of Berlin and the European Union.

The presentation is accompanied by the BERLIN LOUNGE, which offers information on the city's contemporary art galleries, institutions and museums, featuring one of the numerous institutions for contemporary art in Berlin.

The 2014 BERLIN LOUNGE is curated by Freundeskreis Willy-Brandt-Haus e.V. (FkWBH), a nonprofit art and culture association located in the Willy-Brandt-Haus in Berlin. FkWBH was founded in 1996 to enrich the house with art and cultural events, always free to the public.

Since 1996, over 150 exhibitions took place and the galleries at the Willy-Brandt-Haus became a well-known location focused on the presentation of contemporary photography. As part of a political house, the program is committed to historical and social themes.

In addition to the exhibition program the FkWBH is responsible for the art collection, called Sammlung im Willy-Brandt-Haus. With nearly 3000 pieces the collection includes German artworks from 1896 to today: Classic Modern, Post War, East German Art and Young Contemporary Artists.

25 years after the fall of the Berlin wall this year's BERLIN LOUNGE presentation shows various artists of the Sammlung im Willy-Brandt-Haus: Five different positions and five different views to the East. Cornelia Schleime transforms her Stasi files into a bitter ironic comment to her live in the GDR. Gundula Schulze-Ei Dowy and Thomas Kläber portray landscape and people in East Germany, while Ulrich Wüst staged some consumer goods as icons. Finally Erasmus Schröter rescues the remnants of the past out of the darkness and reveals them with a dramatic lighting scenario.

This small selection of our collection gives a preview to next year's exhibition Vom Neuen Sehen zur Fotokunst, which we are going to present in 2015. For the first time the FkWBH will show more than 100 photographs out of its own collection.



'Breaking the Silence' at Willy-Brandt-Haus, 2012 | photograph: Achim Kleuker

contact Freundeskreis Willy-Brandt-Haus e. V.

Stresemannstr. 28, D-10963 Berlin
T: +49 30 25993-785, F: -788
mail@freundeskreis-wbh.de
www.fkwbh.de

c/o Landesverband Berliner Galerien e.V.

Galleries Association of Berlin (lvbg)
Mohrenstraße 63, D-10117 Berlin-Mitte
T: +49 30 310197-14, F: -15
www.berliner-galerien.de

Imprint

This catalogue was published as an accompaniment to ART FROM BERLIN, the collective presentation of Berlin galleries at Context Art Miami 2014.

The project was implemented by the Galleries Association of Berlin (lvbg) with support from the federal state of Berlin and the European Union (ERDF).

Special thanks are extended to the members of the jury:

Christiane Meixner – Critic and journalist, Der Tagesspiegel

Brigitte Werneburg – Critic and independent journalist, taz – die Tageszeitung

Guido Faßbender – Curator Museum Berlinische Galerie

Dr. Matthias Harder – Curator Helmut Newton Foundation Berlin

Concept: Anemone Vostell

Editorial: Dr. Melanie Waldheim

Design and layout: Florencia Young

Printing: Druckerei Conrad, Berlin

All text and image rights are retained by the galleries, artists, and authors unless otherwise stated.

Editions: 2000

Publisher: Galleries Association of Berlin (lvbg)

Mohrenstraße 63, D-10115 Berlin

lvbg@berliner-galerien.de

www.berliner-galerien.de

©2014 Galleries Association of Berlin (lvbg)

lvbg

quality and
competence
for art

Galerie Albrecht

Galerie Berlin

berlin art projects

EDITION BLOCK

Galerie Brockstedt Berlin

Brutto Gusto

CAMERA WORK

CIRCLECULTURE Gallery

Galerie cubus-m

DAD Galerie

Galerie Deschler Berlin

Galerie Horst Dietrich

Galerie KAI DIKHAS

Galerie Dittmar

Galerie Friedmann-Hahn

landesverband
berliner galerien

Galerie Berlin-Baku

galerie gerken

Galerie Michael Haas

Galerie Hartwich Rügen

Galerie Hirschmann

Galerie Carlos Hulsch

Hunchentoot

janinebeangallery

Jarmuschek + Partner

JORDAN/SEYDOUX

Galerie Villa Köppe

Galerie Kornfeld

Grundemark Nilsson Gallery

LEE galerie BERLIN

Galerie LEO.COPPI

Galerie Gilla Lörcher

Anna Jill Lüpertz Gallery

Galerie Martin Mertens

mianki Gallery

Galerie Robert Morat

MORGEN CONTEMPORARY

Galerie Georg Nothelfer

oca gallery berlin

photo edition berlin

Pink Zeppelin

Podbielski Contemporary

POLL Galerie

Michael Reid Gallery Berlin

Petra Rietz Salon Galerie

ROOT

Galerie Sandmann

SCHMALFUSS BERLIN

Karena Schuessler Contemporary

Galerie Thomas Schulte

Galerie Michael Schultz

Galerie SIEVI

Galerie Springer Berlin

TAMMEN & PARTNER

ts art projects

TVDÁRT

Werkstattgalerie

Westphal-Berlin

M. J. Wewerka

C. Wichtendahl Galerie

WOESKE Gallery

ZELLERMAYER Galerie

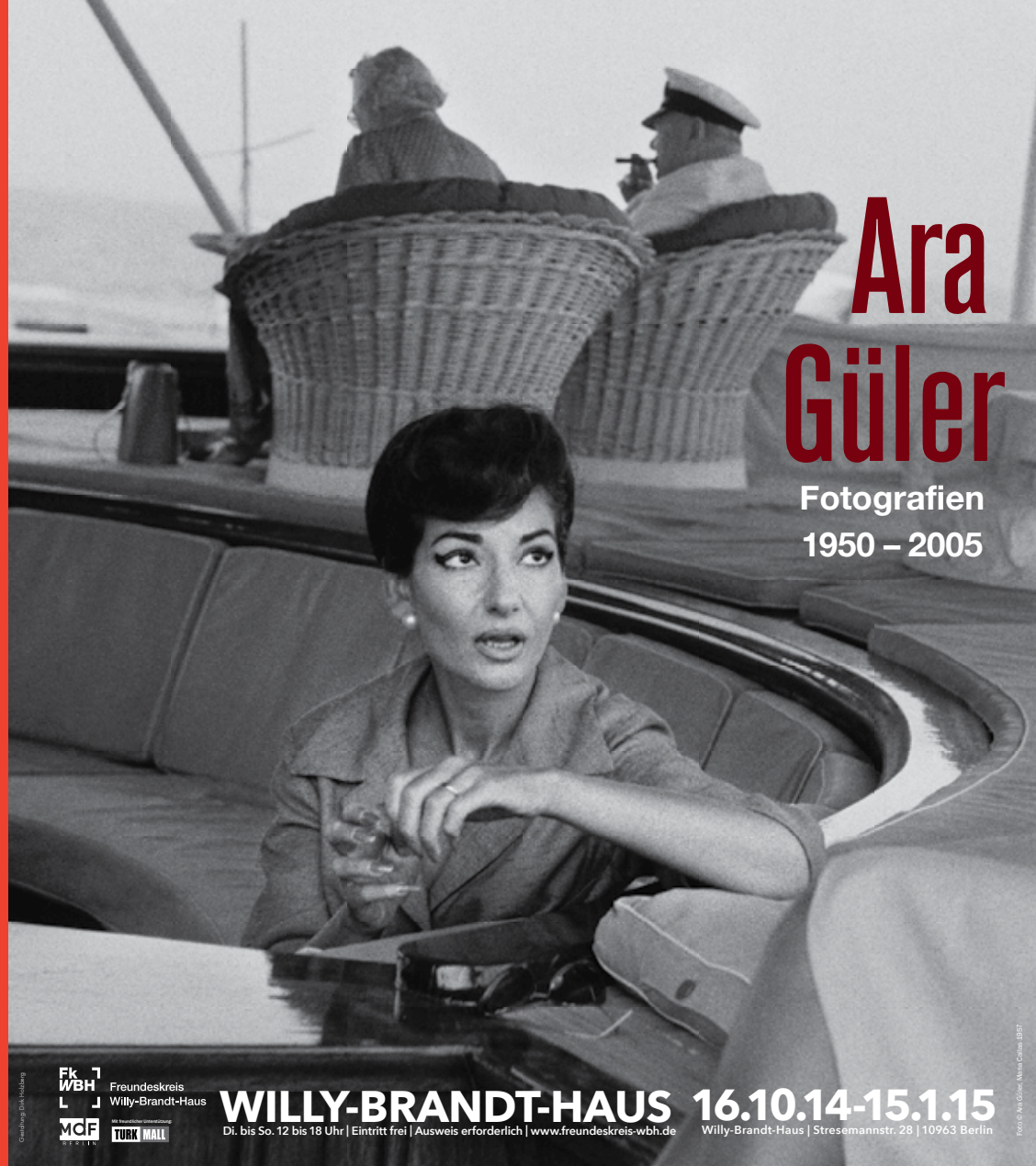
ZHONG Gallery

zone B

www.berliner-galerien.de

Ara Güler

Fotografien
1950 – 2005



Geschäftsbereich

**Fk
WBH**

Freundeskreis
Willy-Brandt-Haus

MCF

TURK MALL

WILLY-BRANDT-HAUS

Di. bis So. 12 bis 18 Uhr | Eintritt frei | Ausweis erforderlich | www.freundeskreis-wbh.de

16.10.14-15.1.15

Willy-Brandt-Haus | Stresemannstr. 28 | 10963 Berlin

Foto: A. Güler, M. Güler, B&T



**BERLINISCHE
GALERIE**
MUSEUM OF
MODERN ART

BERLIN'S MUSEUM OF MODERN ART

REOPENING
IN SPRING
2015

Berlinische Galerie, Alte Jakobstraße 124–128, 10969 Berlin, Wed–Mon 10am–6pm
www.berlinischegalerie.de, www.facebook.com/berlinischegalerie

HELMUT NEWTON FOUNDATION PRESENTS



Helmut Newton, Sigourney Weaver, Los Angeles, 1983 © Helmut Newton Estate

HELMUT NEWTON PERMANENT LOAN SELECTION

FROM 27.11.2014 • HELMUT NEWTON FOUNDATION • MUSEUM OF PHOTOGRAPHY
JEBENSSTRASSE 2, 10623 BERLIN • TUE, WE, FR 10-6, THU 10-8, SA, SU 11-6

Patron

LARS WINDHORST

Special thanks to



We Are On

**New Location
Amerika Haus**

CO Berlin

Amerika Haus
Hardenbergstr. 22-24 · 10623 Berlin
www.co-berlin.org

ERIK NIEDLING EINE PYRAMIDE FÜR MICH

14. November 2014 – 18. Januar 2015

Haus am Lützowplatz
Lützowplatz 9
10785 Berlin

Öffnungszeiten:
Di-So 11-18 Uhr

www.hal-berlin.de

Hal HAUS AM LÜTZOWPLATZ
CENTRUM BERLIN g.V.

